



A NEW LANGUAGE IS A NEW LIFE

Presentation - 2025



Visit Our Website
api-bcebu.com





CAFE CAMPUS

43 Gladiola Street, Amparo Heights, Camp 7
Baguio City, Philippines

Courses Offered:

- Speed ESL 1
- Speed ESL 2
- Lite ESL



SPARTA CAMPUS

37 Yangco Rd., Upper General Luna
Baguio City, Philippines

Courses Offered:

- 24 ESL
- IELTS
- TOEIC



CITY CAMPUS

Zenmist properties # 48 Kisad Rd,
Montinola Subd, Baguio City, Philippines

Courses Offered:

- Biz 2.0
- Speed ESL
- SP ESL
- Lite ESL
- Flexi Course



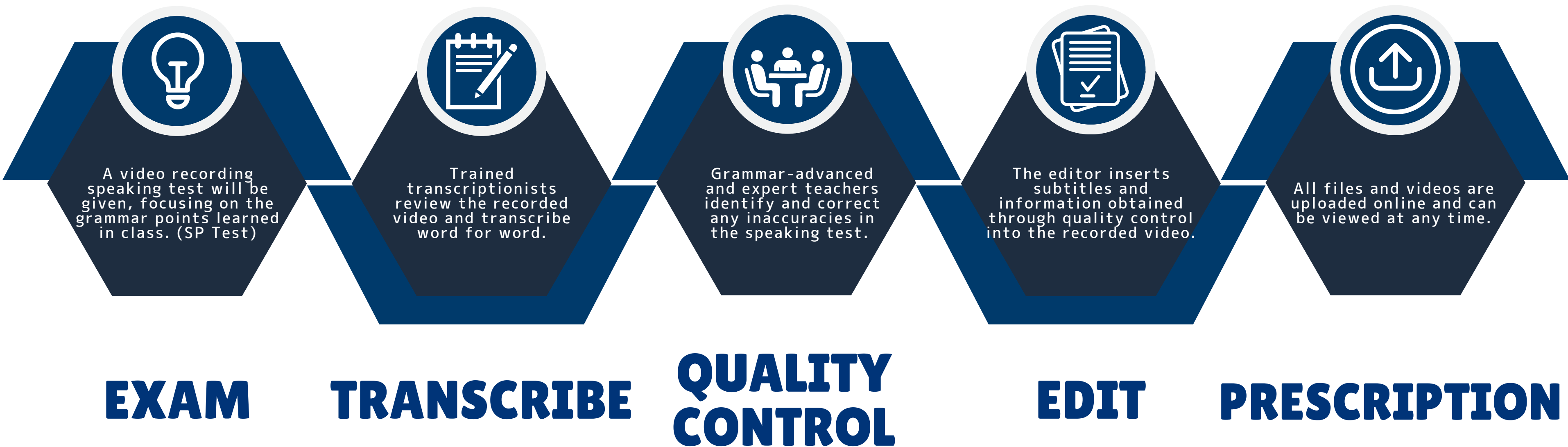
Angasil Corner, Kasinto St., Mactan, Lapu-Lapu City Cebu, Philippines

Courses Offered:

- Speed ESL
- Intensive ESL
- B'Sparta
- Lite ESL 4
- Lite ESL 2
- IELTS

SP PROCESS

SP is an intensive speaking practice program where students self-evaluate their improvement through grammar classes and speaking tests, identifying weaknesses in vocabulary, grammar, stress, and pronunciation.





B' CEBU CURRICULUM

SPEED ESL

Most Popular Course

- 4 | 1:1 classes
- 2 | Group Class
- 1 | Morning Voca (Optional)
- 2 | Night Classes (Optional)

INTENSIVE ESL

Basic to Advanced students

- 6 | 1:1 classes
- 1 | Morning Voca (Optional)
- 2 | Night Classes (Optional)

B'SPARTA

Intensive Spartan Style

- 4 | 1:1 classes
- 2 | Group Class
- 3 | Sparta Program (Mandatory)
- 2 | Self-Study (Mandatory)

LITE ESL 4 LITE ESL 2

Students who prefer a less hectic schedule

- 4 or 2 | 1:1 classes

IELTS

Students who are unfamiliar with IELTS and is planning to prepare for in-depth study of IELTS exam

- 4 | 1:1 classes
- 2 | Group Classes
- 1 | Morning Voca (Optional)
- 2 | Mock Tests (Optional)

NATIVE CLASS

for SPEED ESL, INTENSIVE ESL
and B'SPARTA



T. Martin

Australian teacher

Australian teaching license
15 years of teaching experience
(Australia, Saudi Arabia)

1. Australian English and culture
2. Pronunciation and Conversation



T. Nick

American teacher

TESOL/TEFL qualification
5 years of teaching experience
(Philippines)

1. Standard American English
 - Poetry and Stories-
2. American POP culture
 - Movies, Music and More-

OPTIONAL CLASS

for SPEED ESL, INTENSIVE ESL
and B'SPARTA

VOCA CLASS

**Vocabulary
Class and Test**

- Morning lessons to increase vocabulary
- Two-part morning and evening program
- Practice word pronunciation and learn meaning
- Learn locations, idioms, and patterns that connect words at the same time

*For B'SPARTA students, vocabulary test results and attendance at all lessons will be the criteria for permission to go out on Friday.

NIGHT CLASS

**Various group classes
available**

- It is possible to take further lessons after the regular lesson ends.
- There are various types of lessons, from academic to physical.
 - Idioms and Expressions
 - Speech and Debate
 - Zumba

*Each night class has a minimum number of participants. Night class types are subject to change.

SELF STUDY

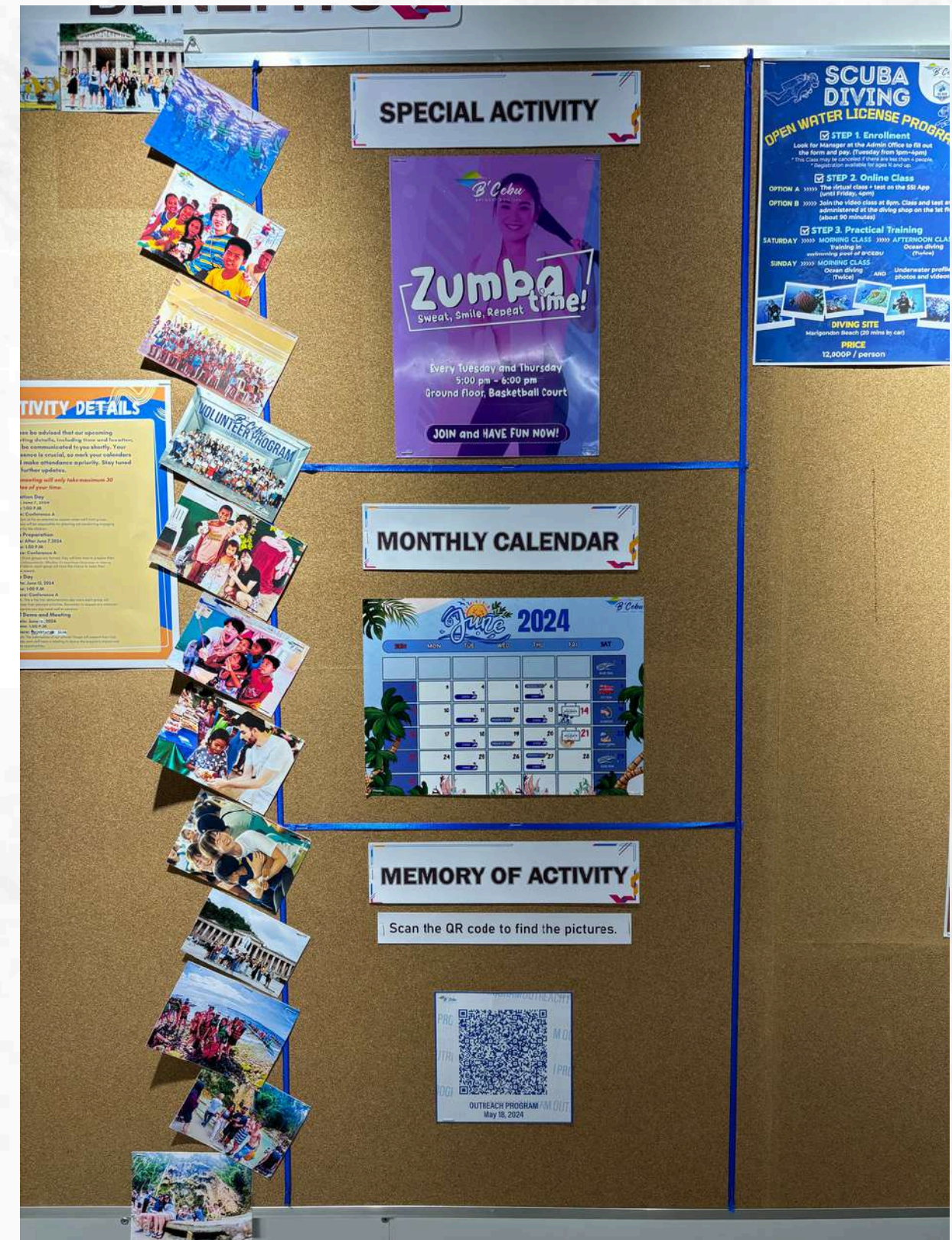
**Attendance is
stictly observed**

- Self-study time after all classes including night classes.
- Attendance will be managed by supervisory staff.

* B'SPARTA course students are required to attend all optional classes. Attendance at all optional classes is required.

B'CEBU ACTIVITY

EVERY TUE, THUR and SAT



B'CEBU OUTREACH PROGRAM

Once a month

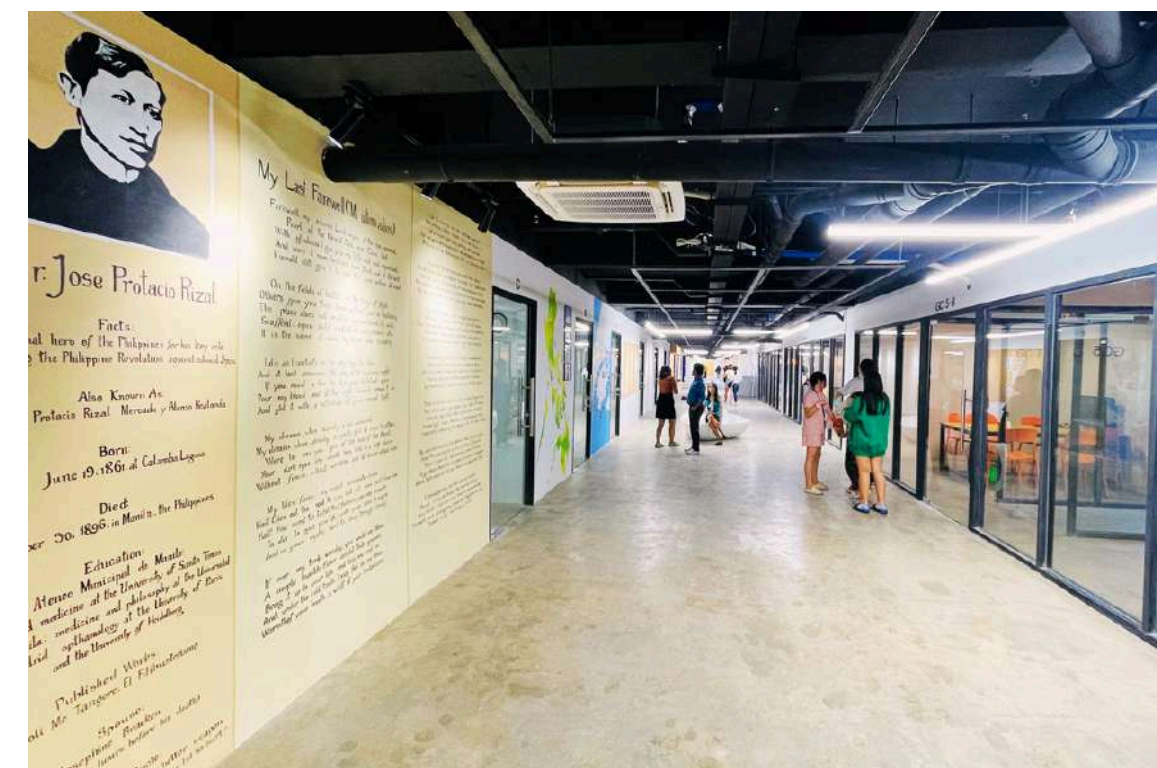


INFORMATION
DESK



FACILITIES

HALLWAY



FACILITIES

ONE ON ONE CLASSROOM



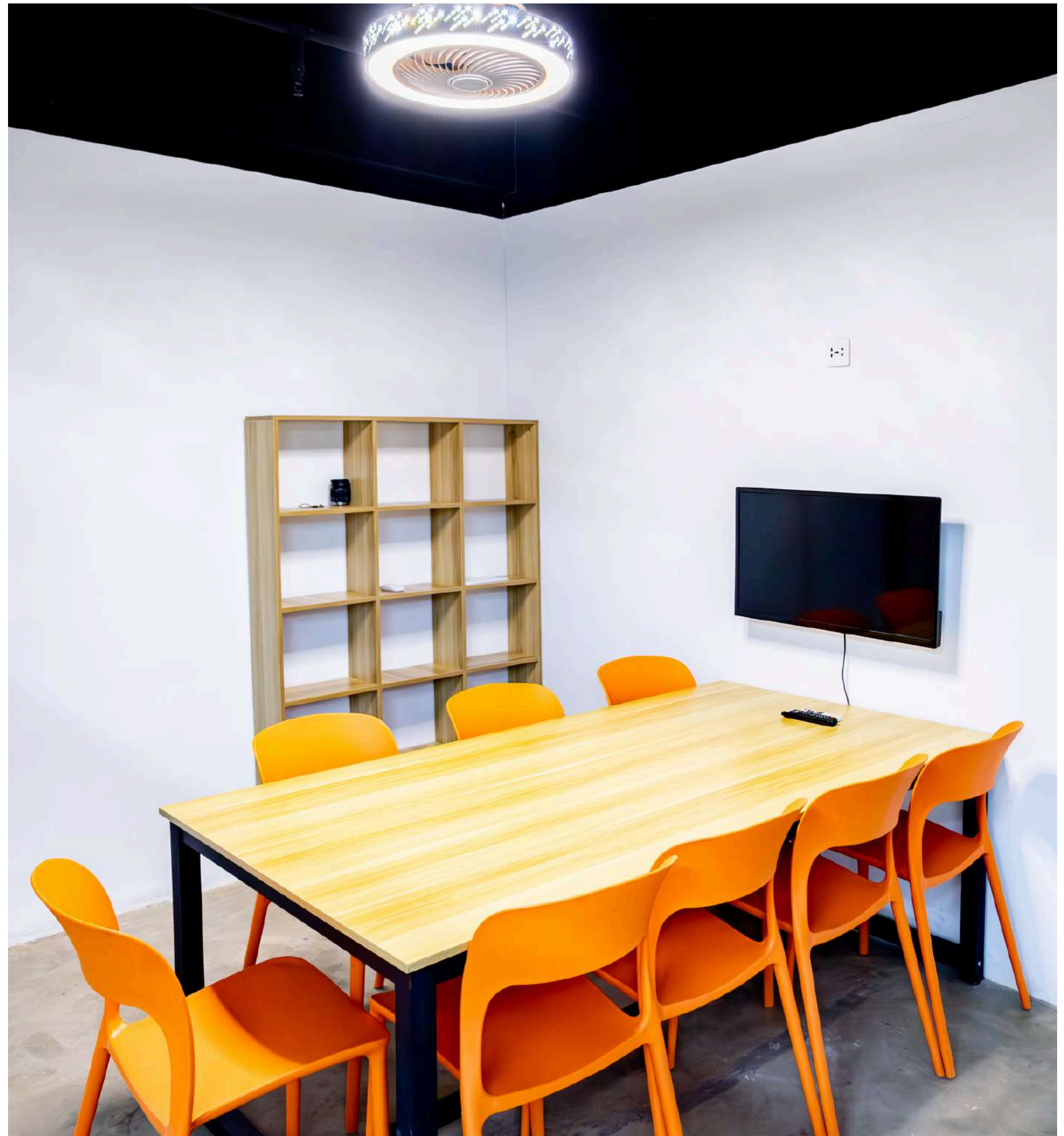
3RD FLOOR

ONE ON ONE CLASSROOM



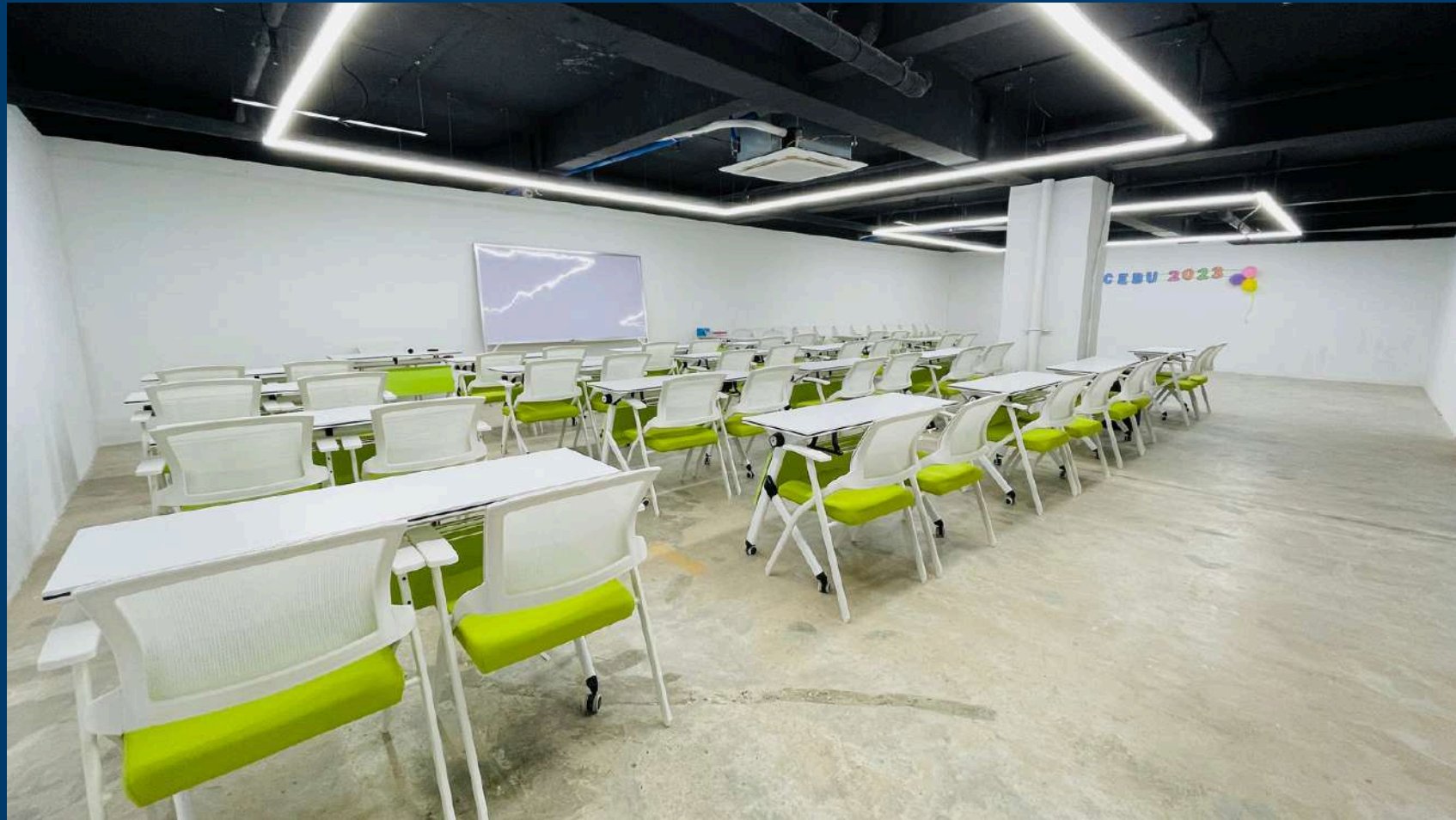
FACILITIES

GROUP CLASSROOM



FACILITIES

PRESENTATION ROOM



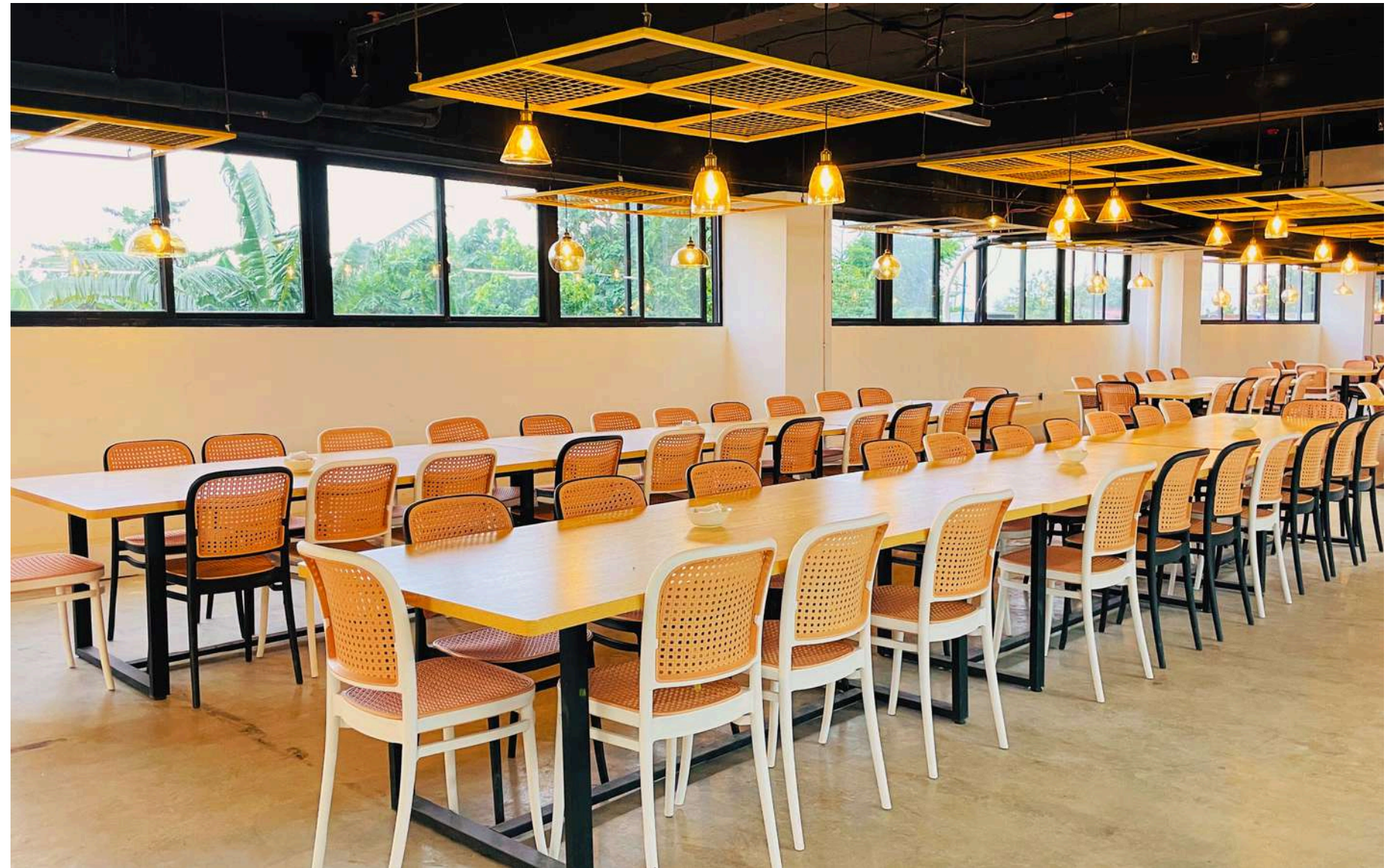
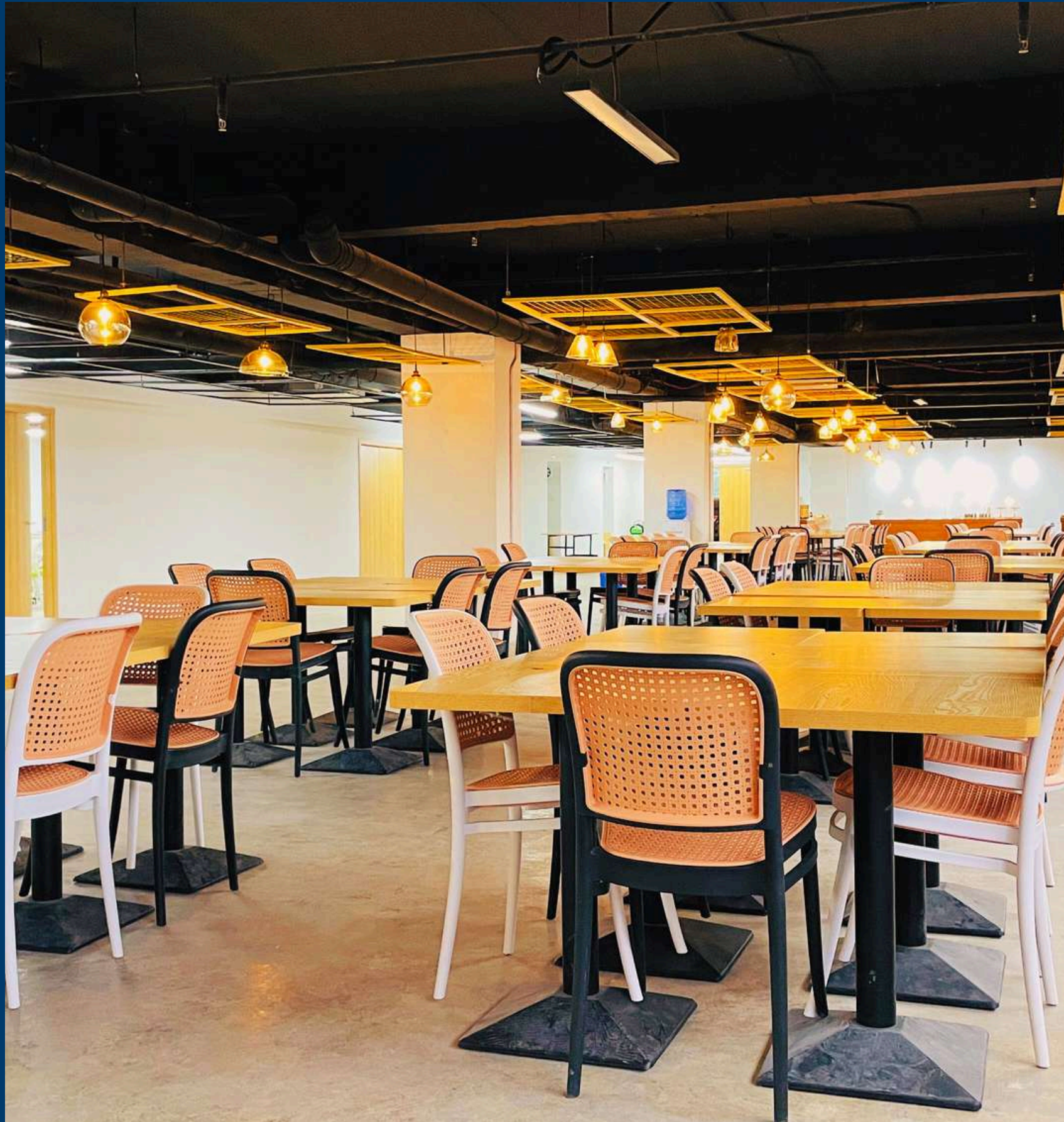
FACILITIES

LIBRARY



FACILITIES

LOUNGE



FACILITIES

DINING



DORMITORIES

BUILDING

View



DORMITORIES

BALCONY VIEW



INSIDE GROUND

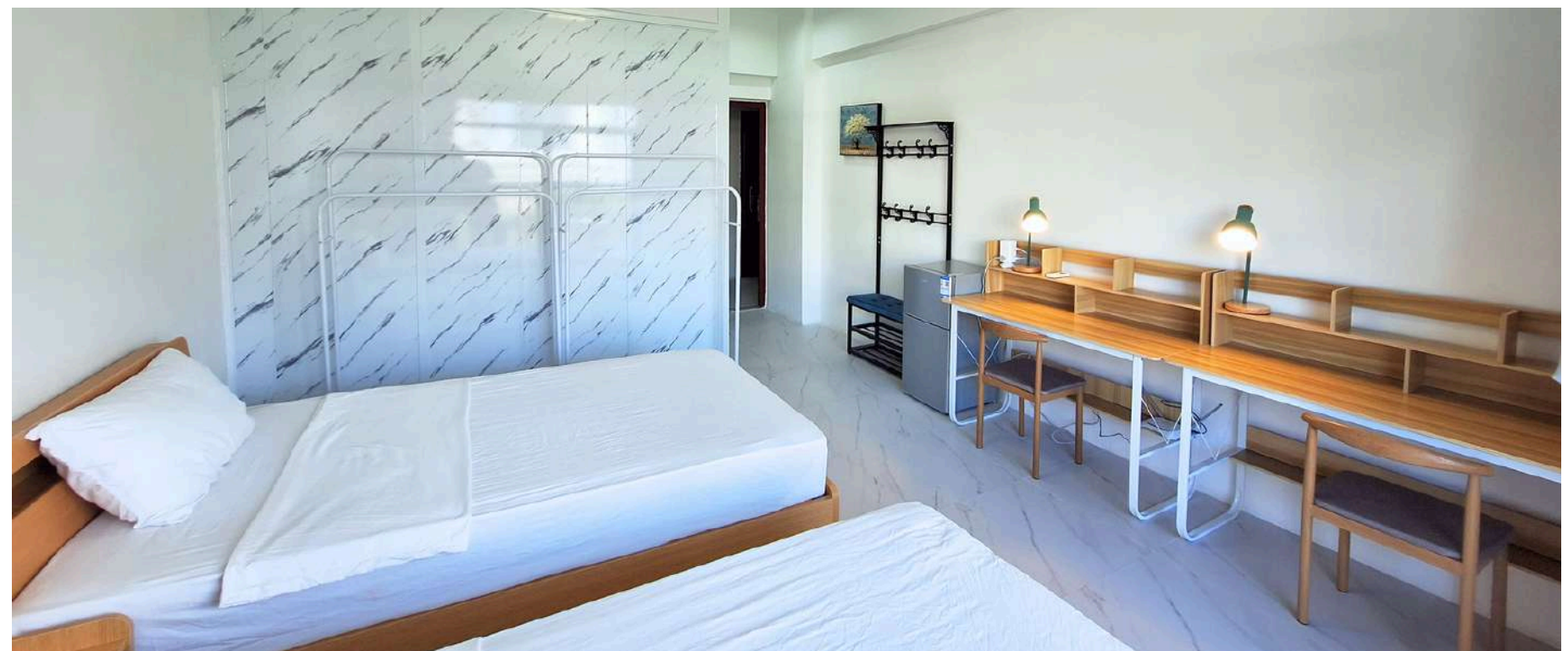


DORMITORIES

SINGLE



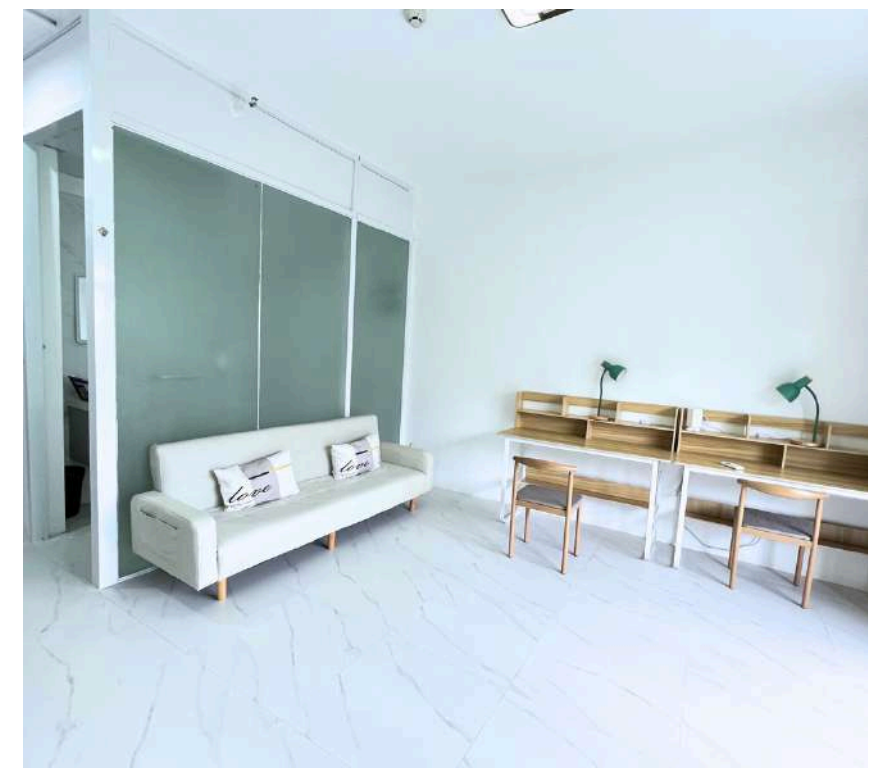
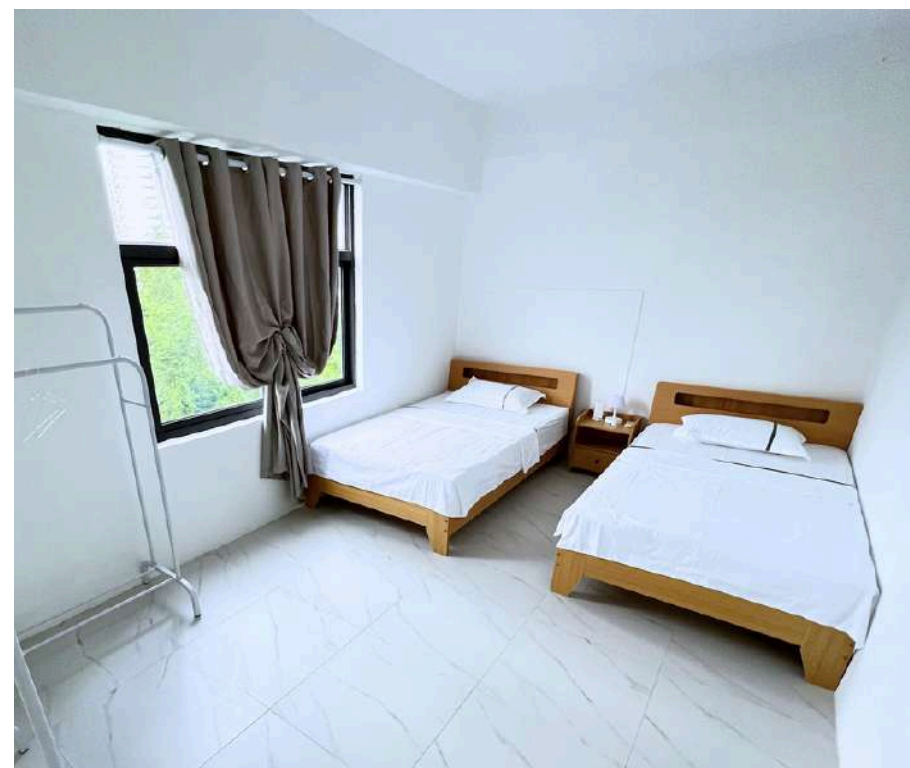
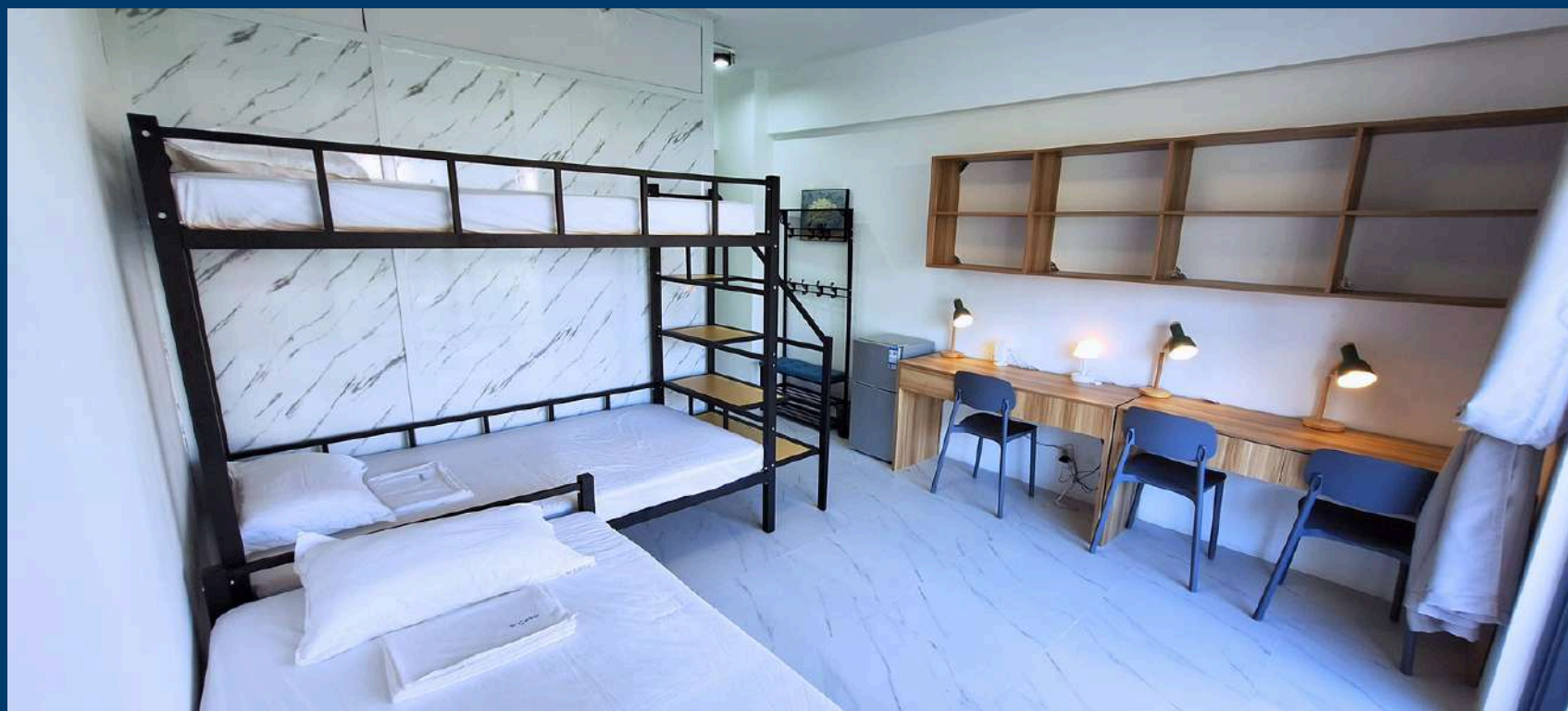
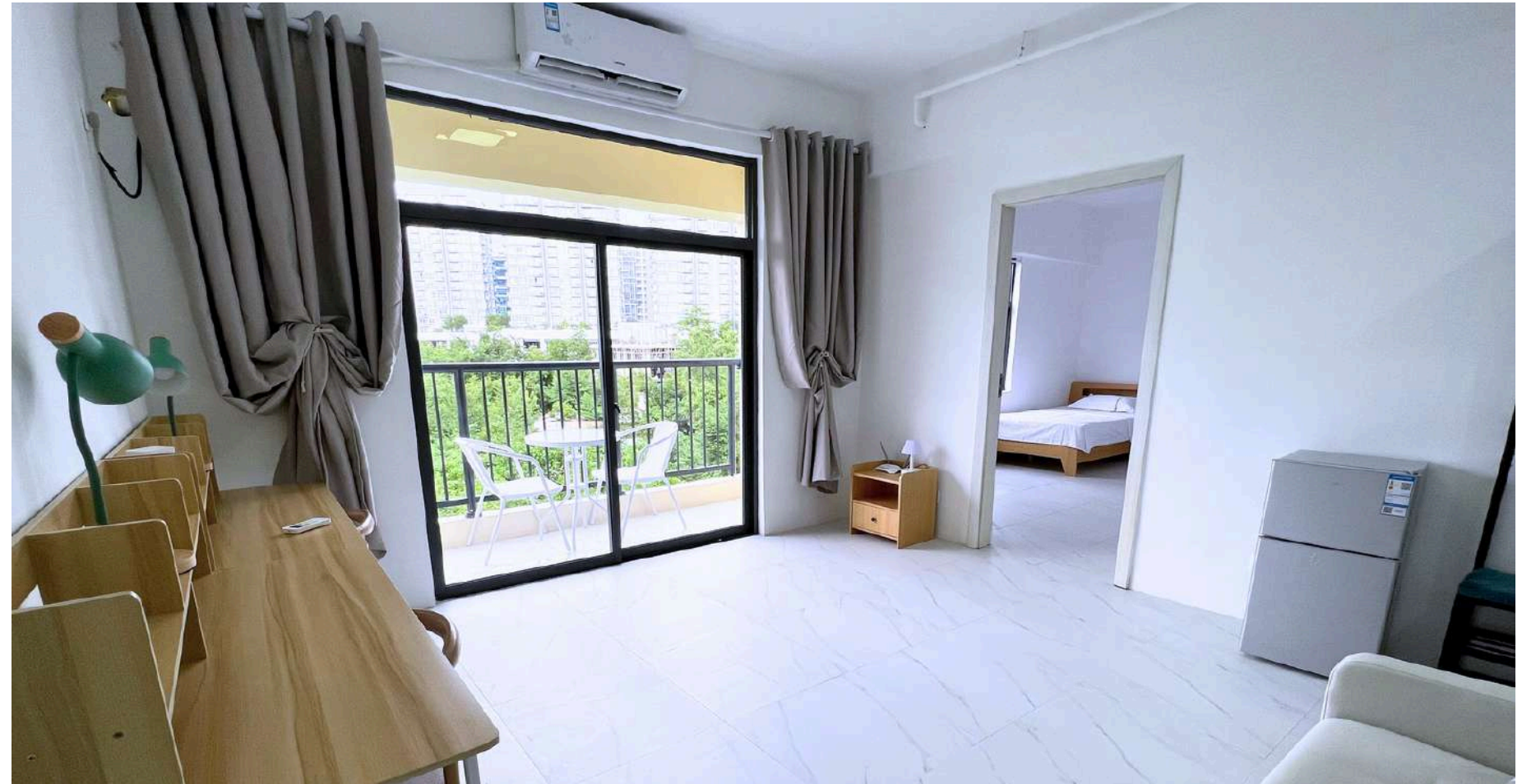
TWIN



DORMITORIES

TRIPLE / 2+1

TWIN
w/ LIVING



DORMITORIES

AMENITY



AMENITY

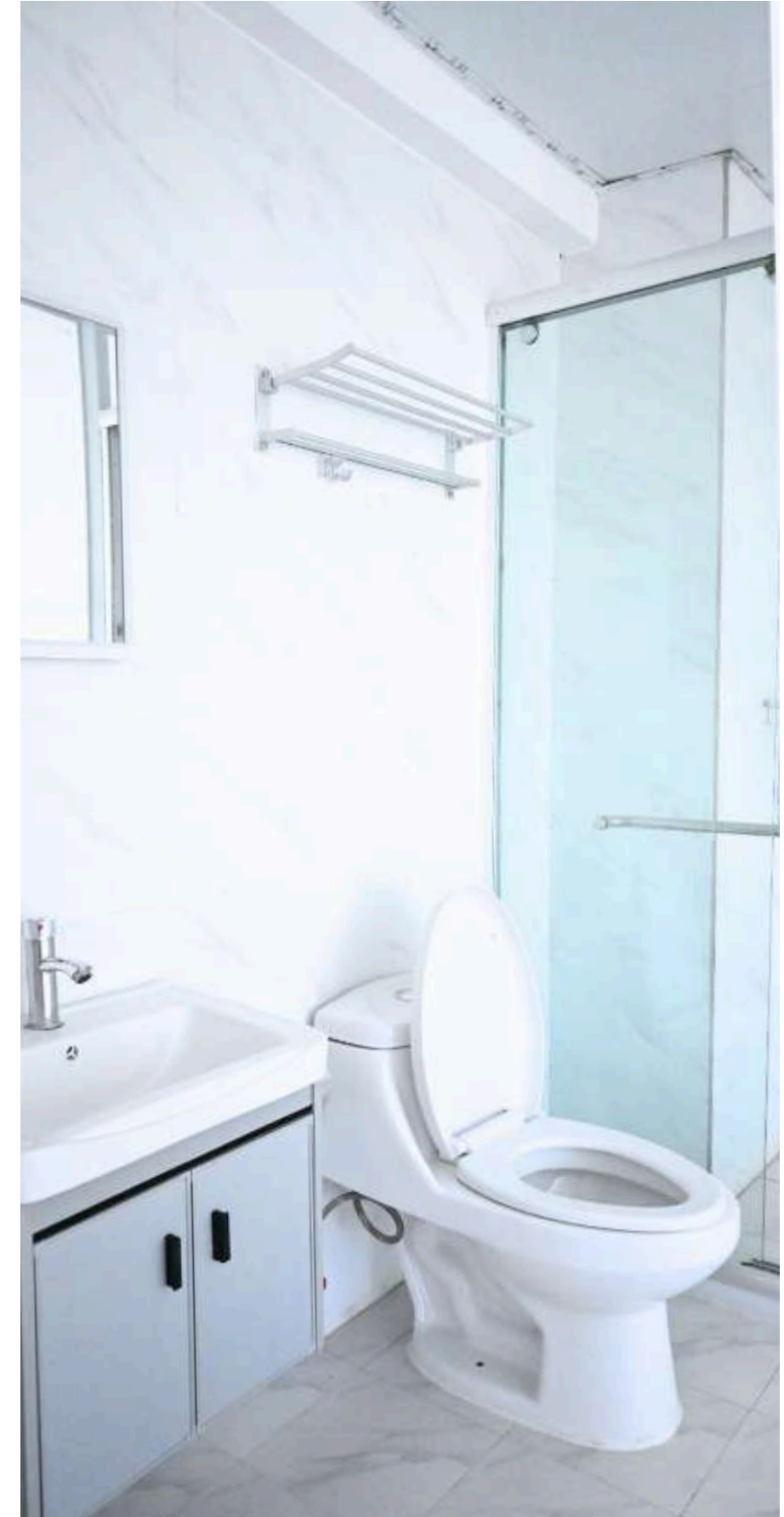


DORMITORIES

BATHROOM



BATHROOM



OUTDOOR FACILITIES

BASKETBALL COURT



OUTDOOR FACILITIES

New Gym



FACILITIES

SWIMMING POOL



DIVING SCHOOL



DIVING OPEN WATER LICENSE PROGRAM

STEP 1. Enrollment
Look for Manager at the Admin Office to fill out the form and pay. (Tuesday from 1pm-4pm)
* This Class may be canceled if there are less than 4 people.
* Registration available for ages 10 and up.

STEP 2. Online Class
OPTION A >>>> The virtual class + test on the SSI App (until Friday, 4pm)
OPTION B >>>> Join the video class at 8pm. Class and test are administered at the diving shop on the 1st floor. (about 90 minutes)

STEP 3. Practical Training
SATURDAY >>>> **MORNING CLASS** >>>> **AFTERNOON CLASS**
Training in swimming pool of B'CEBU Ocean diving (Twice)
SUNDAY >>>> **MORNING CLASS** AND Underwater profile photos and videos
Ocean diving (Twice)

DIVING SITE
Marigondon Beach (20 mins by car)

PRICE
12,000P / person

Let's be a certified diver in B'CEBU
LEARN TO DIVE with SSI COURSE

WHAT IS SSI?
Scuba Schools International

SPECIAL PRICE
for Students at B'CEBU

PHOTO & VIDEO
Underwater Profile

ISSUE LICENSE
Certificates and Digital Licenses

* It includes tuition and equipment rental

REDUCE TIME
Use Swimming Pool and Diving Shop in Academy

AFTER SERVICE
Equipment Rental Support after License

* Rental fee : 500 pesos
* Swimming pool training

CONTACT >>> Manager at the Admin Office | Sharmin: 0960-421-3947

FACILITIES

KINDERGARTEN



LAUNDRY SHOP





Laundry Service

Laundry & Dry

Opening Hours

Monday	8:00am - 5:00pm
Tuesday	8:00am - 5:00pm
Wednesday	8:00am - 5:00pm
Thursday	CLOSED
Friday	8:00am - 5:00pm
Saturday	8:00am - 5:00pm
Sunday	8:00am - 5:00pm



P 200 / 8kg



It takes 1-2 days

- You can pickup washed clothes
- B'CEBU is not responsible for loss and damage

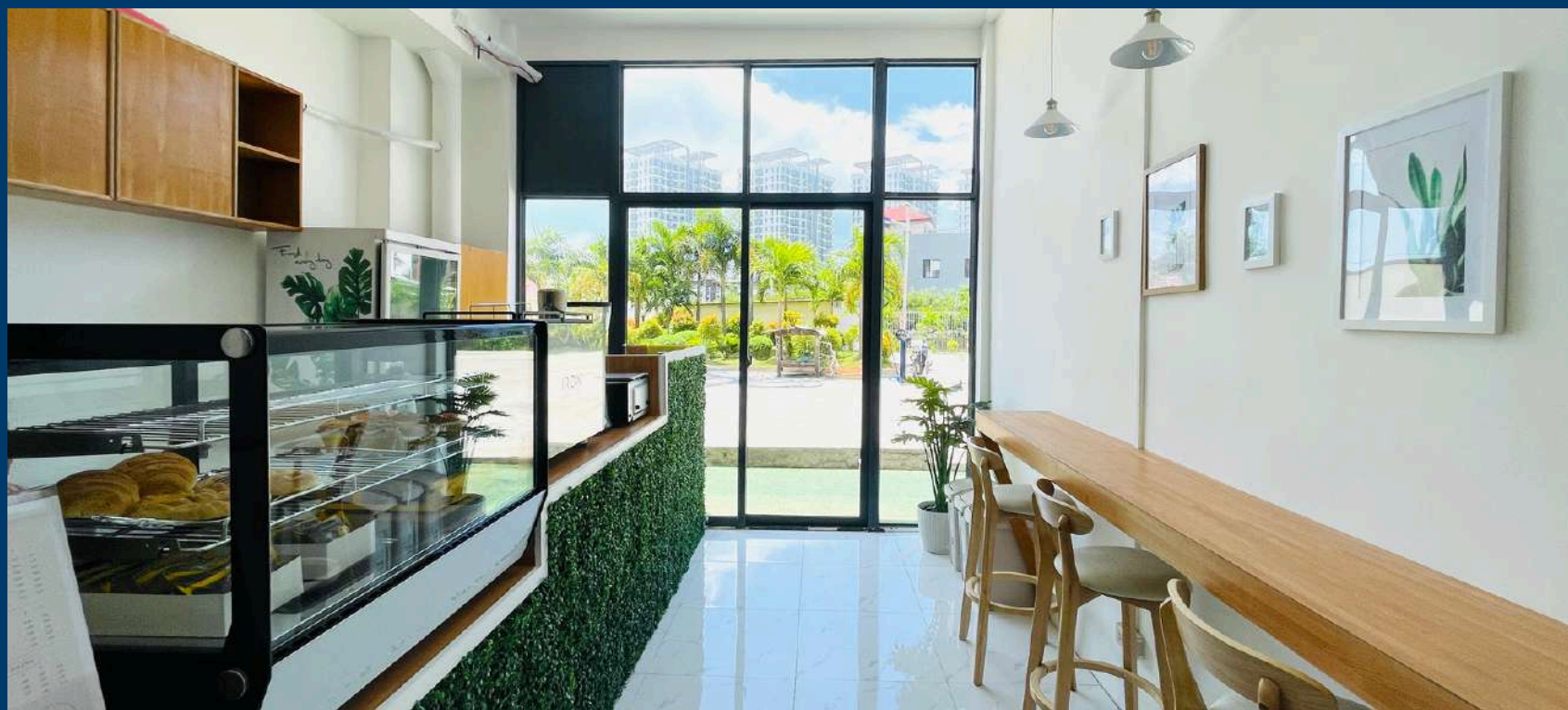
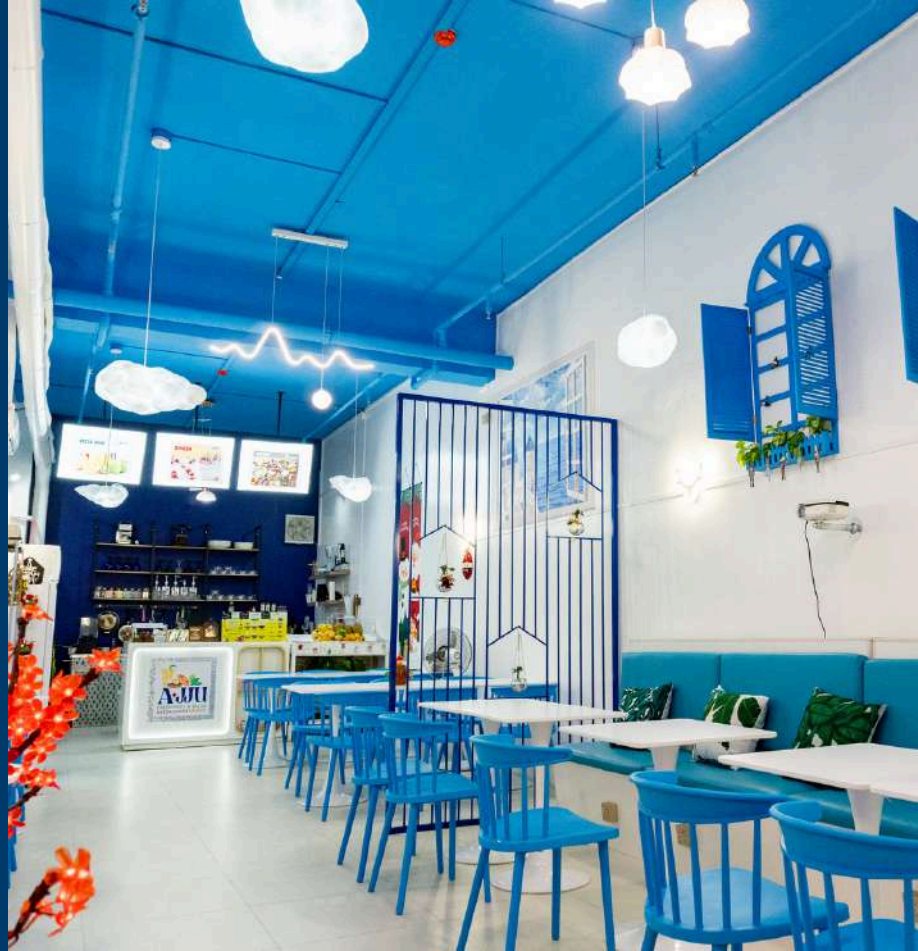
FACILITIES

and more

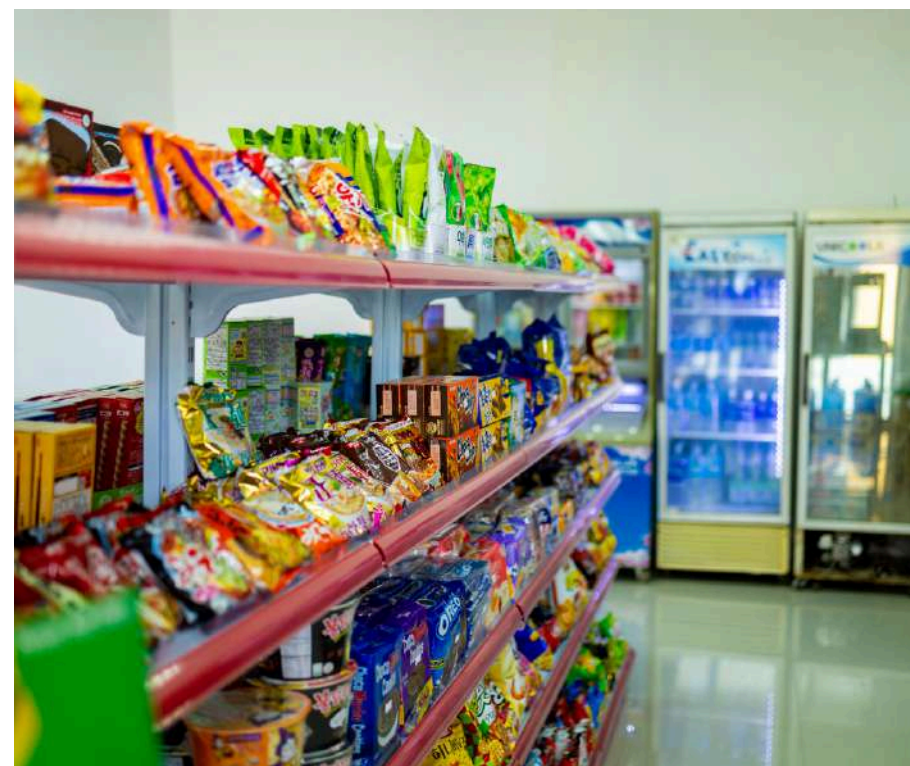


FACILITIES

CAFE



CONVENIENT STORE



Meal



Seven days a week, including weekends, holidays, and national holidays, breakfast, lunch, and
Balanced meals served at breakfast, lunch, and dinner



C section

A section

D section

B section



BUS TERMINAL



B'Cebu
API NEXT EDU. Inc

B'Cebu
API NEXT EDU. Inc

4 SECTOR MAP

SUMMER CAMP

