

EVacademy 

SINCE 2004

MUCH MORE

THAN AN ENGLISH SCHOOL

STUDYING ENGLISH ABROAD
WILL NEVER BE THE SAME

ODEnglish

Mobile: 9946-8090, 9945-90

EV ACADEMY PROFILE

EV Academy was established to provide quality education many years before ESL industry has become widely popular in the Philippines. EV has become a pioneer of providing Communicative Language Teaching to Asians whose access to practical communication skills is limited in their countries.

Moreover, it has always been about the students their educational needs and comfortable living. Up until now, in every curriculum we research and formulate, in every advancement we endeavor to take, our students are always the driving force behind it. To become better, to provide better service and to become the best in what we do. This is why we continuously do what we love to do.

INDEX

ABOUT EV ACADEMY

| | |
|---------------------------------------|----|
| EV Profile | 02 |
| Why learn English in the Philippines? | 03 |
| History & Basic Info | 04 |

CURRICULUM

| | |
|-----------------------------|----|
| Study Plan & Daily Schedule | 06 |
| Roadmap of Courses | 07 |
| ESL | 08 |
| Power Speaking 6&8 | 09 |
| IELTS | 10 |
| TOEIC | 12 |
| Business | 14 |
| Family Course | 15 |
| Digital English | 16 |
| EV Talk (online) | 17 |

GALLERY

| | |
|--------------------------------|----|
| The Campus & EV Facilities | 18 |
| Academy & Students' Residences | 20 |
| Students' Life | 22 |
| Activities & Events | 23 |



WHY LEARN ENGLISH IN CEBU, PHILIPPINES?

The tropical island of Cebu is located in the middle of the Philippine archipelago, in South East Asia, just a few hours away from most Asian capital cities. Since the early 2000s, Cebu has been welcoming students of all ages and nationalities, and has grown as a top destination for learning English. Here are a few reasons why:

ENGLISH CULTURE

The Philippines is the 5th largest English-speaking country in the world and English is one of its two national languages.

GET MORE FOR LESS

Education, tourism, daily expenses... The Philippines offers you more for less! A full English course in Cebu will cost up to 50% less than a similar program in another English speaking country.

STUDY MADE EASY!

For most foreign students, no tourist nor student visa is needed prior to entering the country: get your plane ticket, come to Cebu and EV ACADEMY will take care of the rest on the spot!

THE FILIPINO TOUCH

No wonder why the Philippines is commonly described as "The Smile of Asia"! The natural sense of hospitality and patience of the Filipino people will surely make your learning experience comfortable and productive.

STUDY & HOLIDAY

Cebu is a tropical paradise. Either you enjoy the white sand beaches, the breathtaking beauty of the underwater world, or the frenzy of the giant shopping malls; Cebu has everything to make your stay unforgettable by combining English studies and discovery travels you won't find anywhere else.

FULL PACKAGE

For your convenience, most English Schools in Cebu offer full packages combining daily classes, lodging, catering and selective activities, therefore saving your time and energy.

Establishment

2004

Students Capacity

380

Management



We are on



**STUDENTS FROM
18 COUNTRIES**

**DAILY PRIVATE
LESSONS**

**IDP IELTS
CENTER**

At EV, we have a preference for people who know what they want. As a business team, we started this adventure small and after 19 years, we have helped over 15,000 students built their success story. So jump in and surf the wave with us!

MAP EV Academy is strategically located to get access to different utilities with ease.



EV academy, Gov Cuenco Ave, Nasipit, Talamban, Cebu City 6000, Philippines

+63. (0)32.384.4755

2004

- 2004 · EV Academy grand opening
- 30 student capacity
- 1st school to offer IEP (Intensive English Programs) in Cebu

- 2005 · 1st expansion : 70 students capacity
- EV becomes TESDA accredited

- 2006 · Full TESDA accreditation (All education levels)
- 2nd expansion : 140 student capacity
- Opening of 2nd campus

- 2007 · EV becomes a member of CALA (Cebu Association of Language Academies)
- 1st batch of student from Japan

- 2009 · 3rd expansion : 195 student capacity
- EV becomes the largest campus in the Philippines
- EV launches the "school & resort" concept

2010

- 2010 · 1st batch of student from China and Taiwan
- 2012 · Creation of the EV R&D department (Research & Development)
- EV gains institutional membership with Asia TEFL
- EV gains institutional membership with IATEFL
- Gumi University (South Korea) : Intensive ESL program (40 students)

- 2013 · 1st batch of student from Vietnam
- Launch of full academic English programs (IELTS, TOEIC, TOEFL)
- TESOL accreditation from ITAA
- EV gains institutional membership with the College of Teachers (UK)
- MOA between EV and ACT (Asian College of Technology - Cebu)
- Gumi University (South Korea) : Intensive ESL program (40 students)
- Hanlim University (South Korea) : Intensive ESL program (50 students)

2014

- 2014 · Accreditation from the DOT (Philippines Dept. of Tourism)
- Launching of TESOL and Business English programs
- CUC University (Vietnam) : Teachers training (TESOL)
- Tokyo City University (Japan) : Intensive ESL program
- Shitennoji University (Japan) : Intensive ESL program
- Won Kwang University (South Korea) : Intensive ESL program (50 students)
- EV is recognized as one of the top 5 ESL institutes in the Philippines and invited since then by the DOT (Department of Tourism) to various expos (Kazakhstan, Thailand, etc.)

2015

- 2015 · 1st batch of student from Macao, Hong Kong, Saudi Arabia, Russia, Thailand, Poland, Switzerland
- Launch of TEC TESOL ("Teaching English to Children" professional training)
- 1st Junior Camp (Taiwan)
- Tokyo City University (Japan) : Intensive ESL program
- Shitennoji University (Japan) : Intensive ESL program
- Won Kwang University (South Korea) : Intensive ESL program (50 students)
- Winter 2015 : Launch of "ESL Family program"
- EV Academy appears on Japanese TV

- 2016 · Launching of ELCA program (English Learning & Culture Awareness) in partnership with ASEAN Institute in Thailand
- Shitennoji University
- Won Kwang University (South Korea)
- Kyung Hee University (South Korea)

2017

- 2017 · Member of ENGLISH PHILIPPINES (National ESL Schools Association)
- Opening a new campus (10th OCT)
- 300 students capacity
- Launch of Semi-intensive ESL program
- Power Speaking course
- IELTS Guarantee course
- Approved IDP IELTS TEST CENTRE

- 2018 · Kyung Hee University (South Korea)
- Won Kwang University (South Korea)
- Seiko Gakuin middle & high school
- Zushi Kaisei junior & senior high school
- Shitennoji University
- Kubota Corporation

- 2019 · Junior IELTS camp (Vietnam) : 50 students
- Won Kwang University (South Korea)
- Japan Tobacco Inc.
- KPMG AZSA LLC
- Seiko gakuin middle & high school
- Zushi Kaisei junior & senior high school
- ECC Kokusai College of Foreign Languages
- Shitennoji University

2020

- 2020 · Suspension due to COVID-19 & Maintenance and Preparation for a leap forward
- Launch of EV TALK (Online class)
- 2022 · Re-open after COVID-19 (6th JUN)
- 1st Summer camp from Mongolia

CHOOSE YOUR STUDY PLAN

What is a Study Plan (or SP) ▼

It is a set of conditions that comes with each English course and regulates your daily schedule. EV ACADEMY offers 2 different Study Plans named SP1 and SP2.

SP1

INTENSIVE

SP1 is designed for students who have a clear goal in mind and a real ambition

Mandatory Vocabulary & Pattern classes (25min each) and Self-study are available daily to monitor your progress.

| | | |
|----------|-----------|---------------|
| • CURFEW | MON - THU | Strict |
| | FRI | 17:00 - 24:00 |
| | SAT | 05:00 - 24:00 |
| | SUN | 05:00 - 22:00 |

SP2

SEMI INTENSIVE

SP2 is designed for students who want to learn English and enjoy Cebu

Daily tests and self-study are not available.

| | | |
|----------|-----------|---------------|
| • CURFEW | MON - THU | 17:00 - 22:00 |
| | FRI | 17:00 - 24:00 |
| | SAT | 05:00 - 24:00 |
| | SUN | 05:00 - 22:00 |

DAILY SCHEDULE 1 class runs for 50mins

| | | |
|---------------|-----------------------------|--------|
| 06:30 - 07:30 | Optional class | All |
| 07:00 - 08:00 | Breakfast Vocabulary class | Sparta |
| 08:00 - 12:30 | Morning classes 5 classes | All |
| 12:30 - 13:30 | Lunch | All |
| 13:30 - 17:05 | Afternoon classes 4 classes | All |
| 17:05 - 18:00 | Free time Optional class | All |
| 18:00 - 19:00 | Dinner Activity Yoga/Zumba | All |
| 19:00 - 20:00 | Pattern class | Sparta |
| 20:00 - 22:00 | Self-study | Sparta |

※ Optional classes are FREE and open to everyone. Pick your favorite among our classes.
※ It's subject to number of students or conditions.

OPTIONAL CLASSES

MORNING CLASS for beginner

- Grammar Guide
- Fluency
- Idioms & Phrasal Verbs

AFTERNOON CLASS for intermediate

- Listening
- Movie class
- Discussion & Debate
- Writing Work-Shop


CHOOSE YOUR COURSE

Road map of courses offered in EV Academy

| Field | Course | Overview | Class Structure |
|--------------------------------------|------------------|--|--|
| GENERAL ENGLISH | Intensive ESL | An intensive ESL course with optional classes and self-study sessions. | 4 MTM / 2 SG / 2 LG |
| | ESL Classic | A foundation course covering all language macro skills with grammar and pronunciation classes. | 4 MTM / 2 SG / 2 LG |
| POWER SPEAKING | Power Speaking 6 | A focused ESL course optimizing oral competency by providing speaking classes in all MTM and group classes. | 6 MTM / 1 SG / 1 LG |
| | Power Speaking 8 | A focused ESL course with 8 MTM classes; aiming on effective communications and oral fluency. | 8 MTM |
| ACADEMIC ENGLISH Exam Preparation | IELTS Pre-IELTS | An exam preparatory course for both General and Academic modules of IELTS. At a basic level, students are required to study foundational course: Pre-IELTS | 4 MTM / 2 SG / 2 LG |
| | IELTS Guarantee | An intensive IELTS preparatory course with 12-week duration. IELTS Collaborative System is implemented to achieve target score. | • 1 Morning Class • 4 MTM / 4 Group • 1 Night activity |
| | TOEIC | A preparatory course for TOEIC that focuses on TOEIC strategies for optimum score. | 4 MTM / 4 Group |
| | | | |
| ESP English for Specific Purposes | Business English | A specific business course for effective communication in workplace and business knowledge. | 4 MTM / 4 Group |
| | Digital English | A highly specialized course aimed at utilization of English skills in digital world. | 4 MTM / 4 Group |
| YOUNG LEARNERS | Family Course | A customized General English to improve oral fluency and communication skills among young learners. | 6 MTM |

※ Legend : MTM = Man to Man SG = Small Group class LG = Large Group class

EV LEVELING SYSTEM based on CEFR

| | | |
|--------------|--------|---|
| ADVANCE | E7 | The EV Levelling System is an in-house system that determines the English proficiency levels of students. |
| | E6 | |
| | E5 | |
| INTERMEDIATE | E4 + | Plus(+) levels are added at every main level to acknowledge breakthrough scores. |
| | E4 | |
| | E3 + | |
| BEGINNER | E3 |  |
| | E2 + | |
| | E2 | |
| | E1 + | |
| | E1 | |
| | Pre-E1 | |

CERTIFICATION



ESL

Your fastest way to enter the English-dominated world.

POWER SPEAKING 6&8

Learn Better, Speak Better

CORE ELEMENTS

Teaching English since 2004

Task-based curriculum

Special training for each competency

SCHEDULE

4 MTM & 4 Group

| Class | Subject | Class | Subject |
|-------|-----------|-------|-----------------|
| MTM | Listening | SG1 | Grammar |
| MTM | Speaking | SG2 | Presentation 🗣️ |
| MTM | Reading | LG1 | Listening |
| MTM | Writing | LG2 | Active Speaking |

※ MTM : Man to Man SG : Small Group class LG : Large Group class

RECOMMENDED TO

- ☑ Students who want to improve on comprehensive English skills with confidence.
- ☑ Students who want to obtain good communication skills and use them effectively at any given situations.

WHAT CAN THE STUDENTS LEARN?

- ☑ Convey information clearly, accurately and appropriately.
- ☑ Use a variety of grammatical structures with accuracy.
- ☑ Demonstrate a wide range of expressions to cope with future study or with life in the workplace.

TEACHERS

- ☑ Teachers are highly qualified with extensive teaching experience both in formal school and language academy.
- ☑ Monthly teacher's enhancement program and customized training to ensure highest standards in teaching.

CORE ELEMENTS

6 MTM speaking classes

Speaking Outcome-based classes

Monthly Speaking Progress Test

SCHEDULE

| Class | Subject | Class | Subject |
|-----------|-------------------------|-----------|--------------------|
| MTM PS6&8 | Fluent Speaking | MTM PS6&8 | Dynamic Reading |
| MTM PS6&8 | Conversational English | MTM PS8 | Northstar Speaking |
| MTM PS6&8 | The Lexicon | MTM PS8 | Public Speech |
| MTM PS6&8 | Effective Communication | SG PS6 | Presentation 🗣️ |
| MTM PS6&8 | Current Issues | LG PS6 | Active Speaking |

※ MTM : Man to Man SG : Small Group class LG : Large Group class

RECOMMENDED TO

- ☑ Students whose job is heavy on spoken communication such as hospitality services.
- ☑ University students and working professionals who have minimal opportunities to learn and obtain practical communication skills.
- ☑ Students who wish to improve English pronunciation and accent.

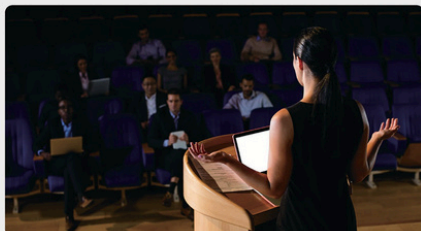
LEARNING OBJECTIVES

- ☑ The communicative approach of classes is based on Communicative Language Teaching (CLT), where application of a language through speaking is the effective way to learn.

TEACHERS

- ☑ Teachers have regular training sessions, with updated power speaking materials. Every month, teachers are given enhancement programs for four hours to improve their skills.

MAESTRO PRESENTATION



• Description

Maestro Presentation is the sum of all skills in English. It is an art that incorporates all the lessons learned in English to produce independent learners. It reflects the presenter's clear understanding of himself, his message, and his communication with audience.



• Presentation Pathway

- In-Class Presentation**
 - Standard Rubrics for In-class (E1/E2 students ; Elementary)
 - Guided presentation with teachers
- Initial Maestro Presentation**
 - E3 and above (Intermediate)
 - Question&feedback from the assessing panel
 - After 4 weeks of studying Maestro Presentation Class
- Final Maestro Presentation**
 - E3 and above (Intermediate)
 - Question&feedback from the assessing panel and the audience
 - After 8 weeks of studying Maestro Presentation Class

• Presentation Criteria

- ☑ Performance
- ☑ Confidence
- ☑ Content of the topic
- ☑ Clarity of Speech
 - Pronunciation, Accent, Intonation Patterns

STOP WRITING

IELTS

Your gateway to studying and living abroad

CORE ELEMENTS

Well-curated Instructional Materials

IELTS Collaborative System Target Score

Official IELTS Test Center


IELTS Guarantee Program (IGP)
Academic / General Module

12-week program aimed to achieve target band score equipped with essential skills, techniques and strategies.

The Regulation of IELTS Guarantee students :

More than 98% attendance rate / Complete 100% of the assignments / bi-weekly mock test band-score Failure to comply with the above regulations will result in forfeiture of the Guarantee program

LEVELING SYSTEM

| | IELTS | CEFR |
|--------------|---------------|------|
| Advanced | 8.5 | C2 |
| | 7.0 | C1 |
| Intermediate | 5.5 | B2 |
| | 4.5 | B1 |
| Beginner | 4.0 and below | A2 |

TESTS ADMINISTRATION

- ✓ Bi-Weekly Mock tests are provided to monitor progress of the student
- ✓ Real time feedback to address student's weak points.

RECOMMENDED TO

- ✓ Students who wish to study or work abroad.
- ✓ Students who wish to have higher band score.

TEACHERS

- ✓ IELTS training is conducted only for selected and experienced teachers.
- ✓ The teachers are provided with updated IELTS trend and new materials

IELTS STUDENT'S INTERVIEW

DUSTIN

After about a month I studied Ielts at EV Academy. Getting used to the new learning method made me quite surprised, but the **dedicated help of the teachers and friends at EV helped me improve more and more.** I met new friends of different nationalities, and I was taught by good teachers. I had an extremely meaningful summer and many experiences. Thank you EV & teachers!



| Course | Entrance score | Target score | Daily structure | |
|---------------------------------------|----------------|--------------|-----------------|-------------------|
| Pre-IELTS | 2.0 | - | MTM : IELTS * 4 | Group : ESL * 4 |
| IELTS Academic & General | 4.0 | - | MTM : IELTS * 4 | Group : IELTS * 4 |
| IELTS Guarantee Academic & General | 4.0 | 5.5 | MTM : IELTS * 4 | Group : IELTS * 4 |
| | 5.0 | 6.0 | | |
| | 6.0 | 6.5 | | |

※ Pre-IELTS : If students have band score below 4.0, the group classes will be ESL

IELTS SCHEDULE

| Class | Subject | Class contents |
|------------------------|-----------|---|
| Morning Class IGP only | | IELTS vocabularies are intensively covered and retained through various study methodologies. |
| MTM | Speaking | Developing the skills to answer the Speaking test strategically with accuracy. |
| MTM | Writing | Developing the writing skills with appropriate approach. |
| MTM | Listening | Developing the listening skills through varied audio recordings and techniques. |
| MTM | Reading | Developing the reading skills with authentic IELTS materials and efficient usage of time frame. |
| Group | Speaking | Providing speaking strategies and mastery through repetitive practice. |
| Group | Writing | Providing writing strategies and practices to enhance weak points. |
| Group | Listening | Providing listening strategies to predict answers, understand context and recognize words. |
| Group | Reading | Provide reading strategies for effective comprehension within given time. |
| Skill Test Class | IGP only | Providing guidelines for students' weak points. This is a customized class for all IELTS competencies. |
| Intensive Coaching | | Additional coaching classes are offered two weeks before the exam to closely monitor progress and add inputs to increase band score. |

IN 2017, EV ACADEMY
RECORDED **100% SUCCESS** ON
ITS IELTS GUARANTEE COURSE

TOEIC

Test Preparation Course for academic and employment TOEIC score requirement.

CORE ELEMENTS

Up-to-date learning materials

Weekly TOEIC Exam

TOEIC Collaborative System

LEVELING SYSTEM

| | TOEIC | CEFR |
|--------------|-------|------|
| Advanced | 945 | C1 |
| Intermediate | 785 | B2 |
| | 550 | B1 |
| Beginner | 225 | A2 |
| | 120 | A1 |



In TOEIC course, we practice TOEIC speaking day after day (...) can't study hard by myself, so this system really helps me and EV provides Mock TOEIC test every Friday. I took it every week. It was a great motivation to study more week after week.

RECOMMENDED TO

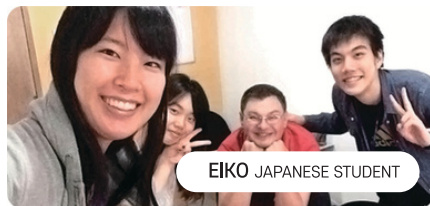
- Students who want to enter specific universities that require a specific TOEIC score.
- Job applicants who seek position in high-ranking companies, as well as workers who aim for a job promotion.

TEACHERS

- TOEIC training is conducted only for selected and experienced teachers.
- They must have at least 95% performance evaluation rating and must have an average mock test score of 900.
- The teachers are provided with updated TOEIC new materials and Test sets

TESTS ADMINISTRATION

- A placement test is required.
- Weekly Test and feedback is provided.



Here I got the right knowledge about TOEIC and useful strategies in solving the questions. EV offers many MTM classes, so I can just concentrate on studying.

TOEIC SCHEDULE

| Class | Subject | Class contents |
|-------|------------------|--|
| MTM | TOEIC Reading | Improving English proficiency in TOEIC grammar structures and TOEIC lexicon. |
| MTM | TOEIC Vocabulary | Learning wide-range of vocabulary commonly used in TOEIC Test. |
| MTM | TOEIC Listening | Developing specifically test-taking and linguistic skills especially in dealing with the different native speaker's accents. |
| MTM | TOEIC Grammar | Grammar class is provided to improve fundamental bases of English |
| Group | TOEIC Reading | Building test-taking skills over complicated vocabulary and grammar. |
| Group | | |
| Group | TOEIC Listening | Developing strategies to recognize relevant information in listening passages. |
| Group | | |

※ Note: If new students get a TOEIC score lower than 400, they will be enrolled in TOEIC Preparatory Course. This course includes 4 TOEIC MTM Classes and 4 ESL Group Classes. When they get 400 in the Weekly Mock test, they will automatically join TOEIC Group Class.

ETS TOEIC





BUSINESS

English for specific business purpose for both seasoned and young professionals.

CORE ELEMENTS

Extensive relevant experience of the Faculty

Customized Learning Materials

Weekly & Monthly Business Presentation

RECOMMENDED TO

- Business professionals who seek to improve their business language both spoken and written.
- Students who want to be able to use formal English

BUSINESS ENGLISH SCHEDULE

| Class | Subject | Class contents |
|-------|------------------------|---|
| MTM | Business Writing | Aims to prepare students for various kinds of writing within business environment such as business letters, e-mails, memos, CV and cover letters that they will encounter in their professional career in the future. |
| MTM | Business Communication | Helps students gain confidence in communicating with people in the corporate world, express their thoughts clearly to the English speakers and communicate effectively using English in various business situations. |
| MTM | Business Negotiation | Gaining confidence and competence in negotiating with colleagues, bosses, customers and suppliers through a variety of practice activities that can be recorded on audio. |
| MTM | Business Vocabulary | Developing vocabulary skills related to business including phrasal verbs and collocations that are important in business communication. |
| Group | Market Leader | Learning new words, phrases and collocations which help to activate the vocabulary range, listening and reading authentic texts for comprehension and case studies and role plays. |
| Group | Business Presentation | Building on the concepts of communicating business ideas to others as well as giving information in front of an audience. |
| Group | Business Grammar | Highlighting on essential grammar skills in business environment. |
| Group | Listening | Acquainting students with different recorded speeches and conversation and short news stories. |

WHY STUDY BUSINESS ENGLISH?

- This course offers a particular focus on oral competencies. It is designed for businessperson willing to boost their oral competencies in business in a short period of time.
- All teachers willing in the program are from business universities with business diploma. They are qualified to teach business class on theoretical and practical bases.
- Instructional materials are carefully prepared and selected to cater to specific business needs of the students.

DIGITAL ENGLISH

THE GATEWAY TO THE DIGITAL WORLD

This course teaches students to learn, use and practice English in establishing and expanding human network in the digital world. It is an output-based course which deals with the application of the language into social media through messaging and quality content creation like blogging, vlogging and podcasting.

TARGET LEVEL

- Intermediate (E3 and above)



COURSE OUTCOMES

At the end of the course, as digital citizens, the students will be able to:

- Access and search information in English.
- Improve fluency in English and converse daily.
- Use social media platforms effectively.
- Create and produce quality digital content in English.
- Expand human network worldwide through communicating in English.

DIGITAL ENGLISH SCHEDULE

| Class | Subject | Contents |
|-------|---|---|
| MTM | Reading & Writing | Developing reading and writing skills such as paraphrasing and summarizing, understanding the organization of passages |
| MTM | Listening & Speaking | Discussion of techniques to develop listening and speaking skills. |
| MTM | Grammar & Vocabulary Digital English | Intensive overview/review of the basic elements and important grammatical structures of the English language with a comprehensive vocabulary practice |
| MTM | Content Creation | Output-based activities which are designed for applying knowledge and skills in the crafting, writing and creation of blogs, vlogs and podcasts. |
| SG1 | Digital Literacy | Encouraging students to become responsible digital citizens as well as competent producers and consumers of media and information. |
| SG2 | Social Media English | Applying practiced skills and use English language as they explore and engage into hands-on experience on the different social media platforms . |
| LG1 | Active Speaking | Stimulating lively interactions to foster a fear-free learning atmosphere to learn English. |
| LG2 | Messaging & Socializing | Conversational messaging using the different social media applications to expand their network of people and socialize globally. |

FAMILY COURSE

CORE ELEMENTS

All MTM classes for junior students

Dynamic faculty

Various indoor & outdoor activities

FAMILY COURSE SCHEDULE

| JUNIOR | | GUARDIAN | |
|------------|------------|--------------------------------------|-------------------|
| MTM | Speaking | MTM | Speaking |
| MTM | Listening | MTM | Listening |
| MTM | Reading | MTM | Reading |
| MTM | Writing | MTM | Writing |
| MTM | Vocabulary | Group Can choose 2 classes | • Active Speaking |
| MTM | Grammar | | • Listening |
| Self-Study | | | • Grammar |
| Self-Study | | | • Presentation |

※ Note : On self-study time, guardians are in charge of the activities of the students. There is also an optional class from 5:10 - 6:00 pm. This focuses on arts and other recreational activities for students. Guardians may also choose a different group class of their choice.

RECOMMENDED TO

- ✓ Junior students who want to be exposed to English environment
- ✓ Students who wish to have private class

WHY STUDY IN FAMILY COURSE?

- ✓ EV Academy has the best facilities and amenities to give the best learning experience to children and adults. All areas are child-friendly with 24-hour security staff to ensure everyone's safety.

Learn & Play



Explore with EV



Online English learning platform for convenient learning and continuous application of practical English skills. With faculty that boasts nearly 20 years of relevant experience and teaching approach that puts emphasis on oral communication and proficiency.



Teaching English in cebu, Philippines since 2004



FREE online materials provided. Offers a variety of textbooks per level.



A large pool of regular teachers
Guaranteed international teaching standards



Uses a proven easy and stable online teaching platform

INTENSIVE PLAN 50 mins

| Time | Sample schedule | |
|---------------|-----------------|-----------------|
| 08:00 - 08:50 | Morning class | MTM 1 Listening |
| 09:00 - 09:50 | | MTM 2 Reading |
| 10:00 - 10:50 | | MTM 3 Speaking |
| 11:00 - 11:50 | | MTM 4 Writing |
| 12:00 - 13:00 | Afternoon class | MTM 1 Listening |
| 13:00 - 13:50 | | MTM 2 Reading |
| 14:00 - 14:50 | | MTM 3 Speaking |
| 15:00 - 15:50 | | MTM 4 Writing |

| on | Details |
|------|-------------------------------------|
| 3:25 | * Classes in |
| 3:55 | Philippines |
| 4:25 | 08:00 - 22:00 |
| 4:55 | Thailand & Vietnam 07:00 - 21:00 |
| 5:25 | China & Taiwan |
| 5:55 | 08:00 - 22:00 |
| | KOREA & JAPAN 09:00 - 23:00 |
| 1:55 | |

s you want

The Campus



Behind the gate, a dense tropical jungle; a green buffer zone to cut yourself off from the city bustle. As you move forward, the jungle opens on a huge manicured lawn, with a multi-level superstructure standing tall; you are at EV academy.

EV Facilities



Pool



Billiard



Gym



Yoga



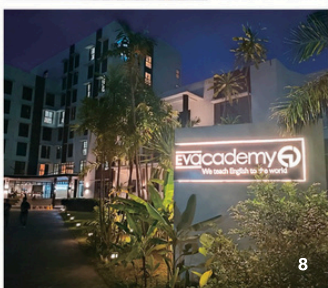
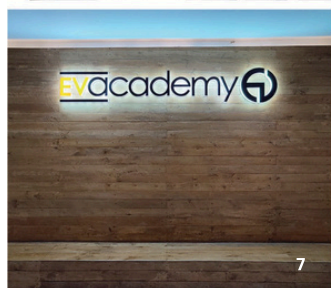
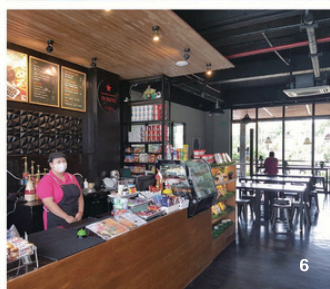
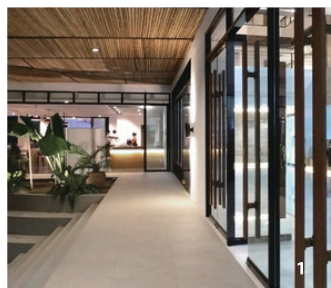
Basketball



Zumba



Ping pong



1, 2 Lobby area 3 Swimming Pool
4 Garden table 5, 6 Cafe
7, 8 Night view

1 Yoga 2 Zumba 3 Basket ball
4 Table tennis 5 Air hockey 6 Billiard
7 EV bakery 8 Restaurant (Buffet)



Academy



Conference room

380

STUDENTS
CAPACITY

30

GROUP
CLASSROOMS

175

CUBICLES

MTM

• 1 Teacher
• 1 Student

SG

• 1 Teacher
• 5 Students

LG

• 1 Teacher
• 8 Students



1



2



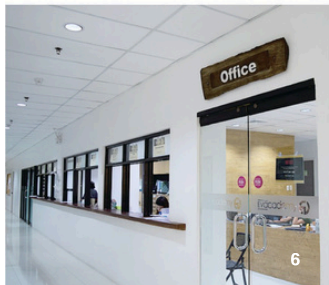
3



4



5



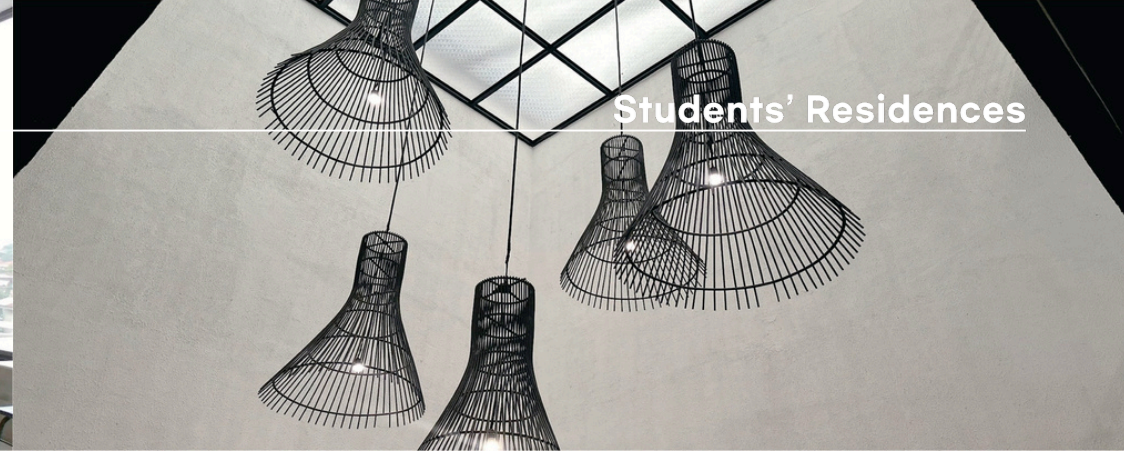
6

The academic area covers three floors. It has been specially designed for educational purposes. Corridors are wide to ensure a smooth workflow. There is a large fully-glazed lobby facing the garden and plenty of comfortable nooks to relax between classes.

- Cubicles for private lessons
- Small and Large classrooms
- 1 Auditorium Movies, OT, Graduation ceremonies
- 1 Library for silent studies and Mock tests
- 3 Large multifunctional spaces
- 1 Faculty room
- 3 Meeting rooms

1 Auditorium 2 Academy hall 3 Group class 4 MTM class 5 Library 6 Office

Students' Residences



Elevator



Aircon



Refrigerator



1/2/3/4



Hair dryer



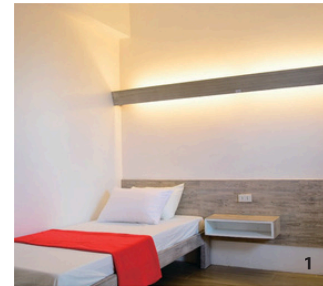
Individual
safe



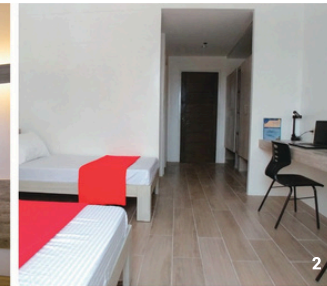
Hot water



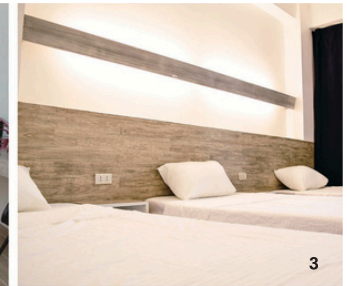
Earthquake
resistant 8.0



1



2



3



4



5



6

We have built for you bright and comfortable rooms that combine neutral tones, wooden tones and modern furniture in order to create functional and welcoming living spaces. For your convenience and safety, the students residences are located on campus. Off campus lodging options are available upon special request and under specific criteria.

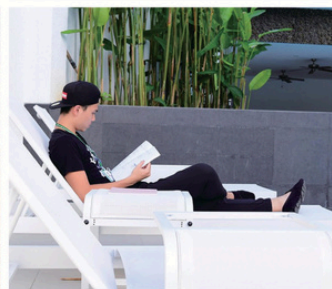
NOTE The residences are split into 2 sections : upper floors for female students and lower levels for male students. The entire building is a non smoking zone. Electric billing is individual and based on your personal consumption.

1 Single 2 Double 3 Triple 4,5 Quadruple 6 Bathroom 7 Indoor-Garden



7

Students' Life



Students' Review

JINA VIETNAMESE STUDENT

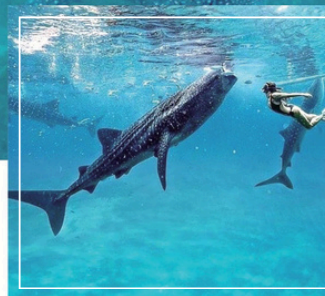
I studied in EV Academy for 2 months. EV is not only an English school to study English, it is also a place for me to have a chance to meet a lot of friends from different countries. Especially, all of EV staffs are really friendly and approachable. It made me feel at home.

CHLOE TAIWANESE STUDENT

3 months that I needed to learn English in EV academy. During the first 3 weeks, I studied ESL. In my opinion, this program is better for beginners. For ESL group class, I met new friends. My classmates were friendly and courteous. After that, I studied IELTS.

Activities

We now offer outdoor activity every week. Take part & enjoy !



OSLOB TOUR

- Whale watching
- Tumulog falls
- Oslob church
- Lunch in Alcoy

CITY TOUR

- Magellan's Cross & STO. Niño church
- Port San Pedro
- Temple of Leah
- La tegola busay / Top of Cebu / BBQ house

ISLAND HOPPING

- Docking place
- Lunch on boat
- Gilutongan



Choose from these major tourist attractions for much-deserved leisure time !

Events





 **9945-9080, 9946-8090,
7210-1140**

